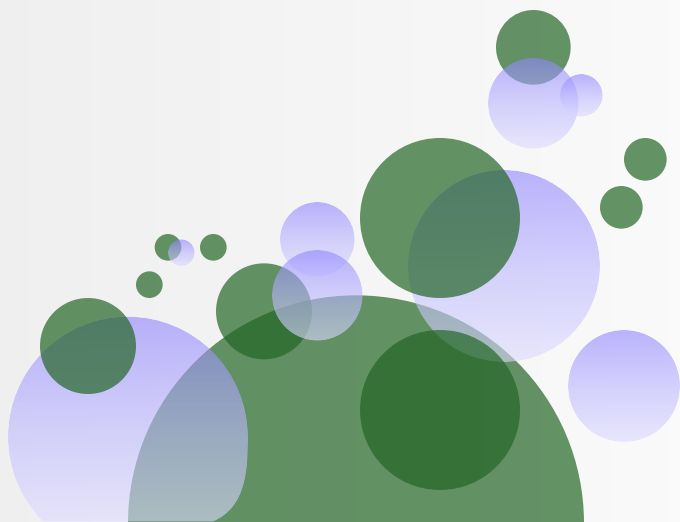
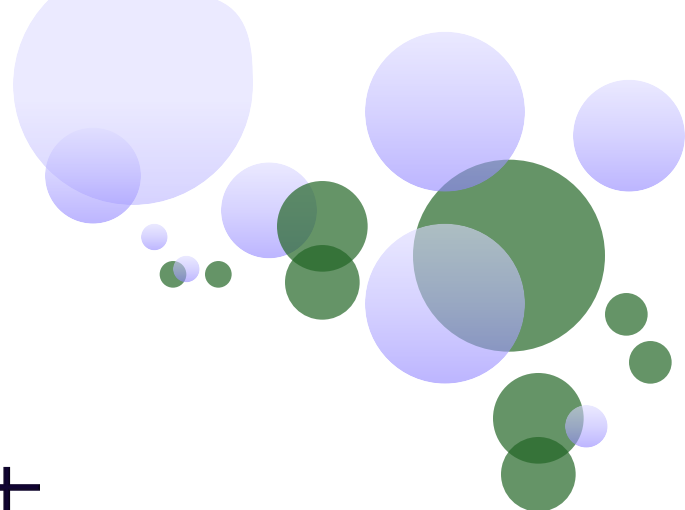


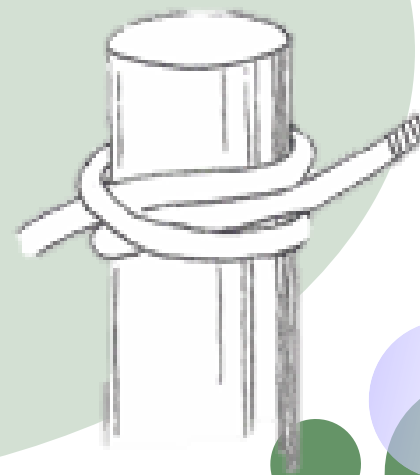
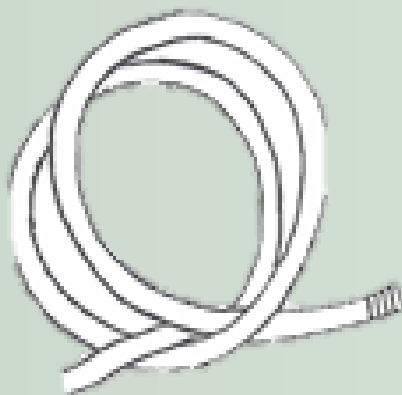
繩結



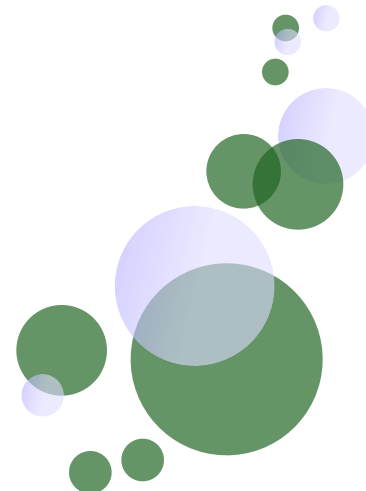
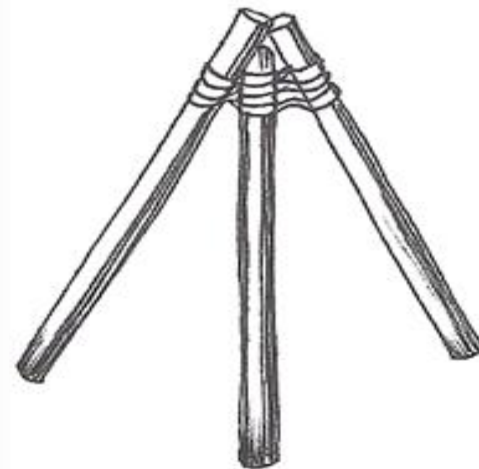
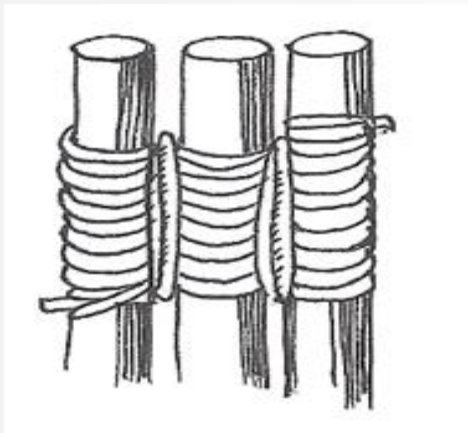
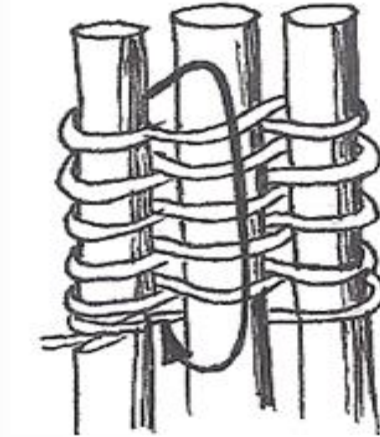
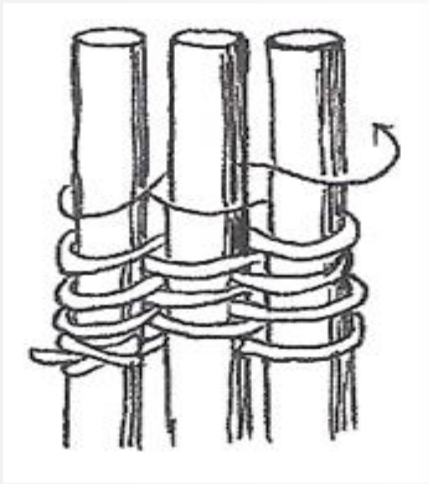
雙套結 (CLOVE HITCH)



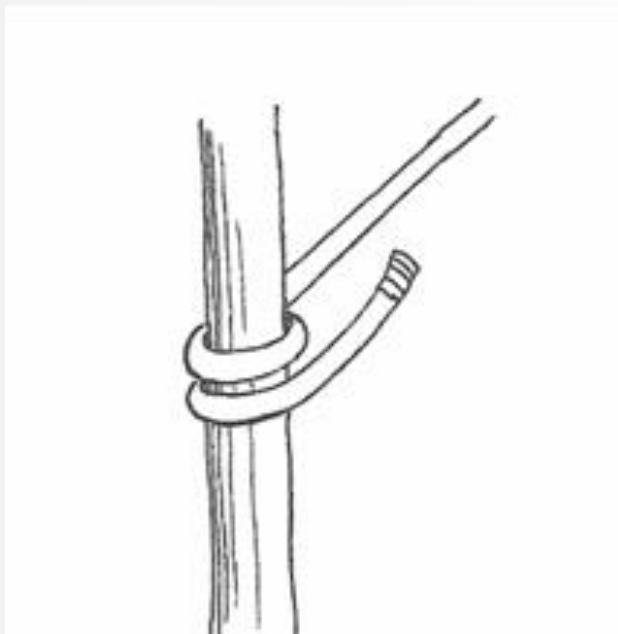
- 用途
- 結法



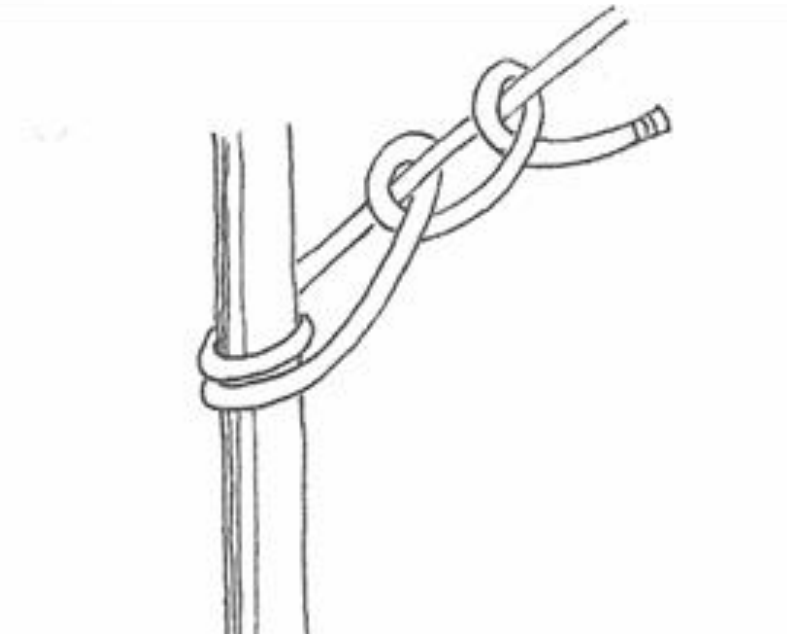
三腳架編結【八字編結】



營釘結



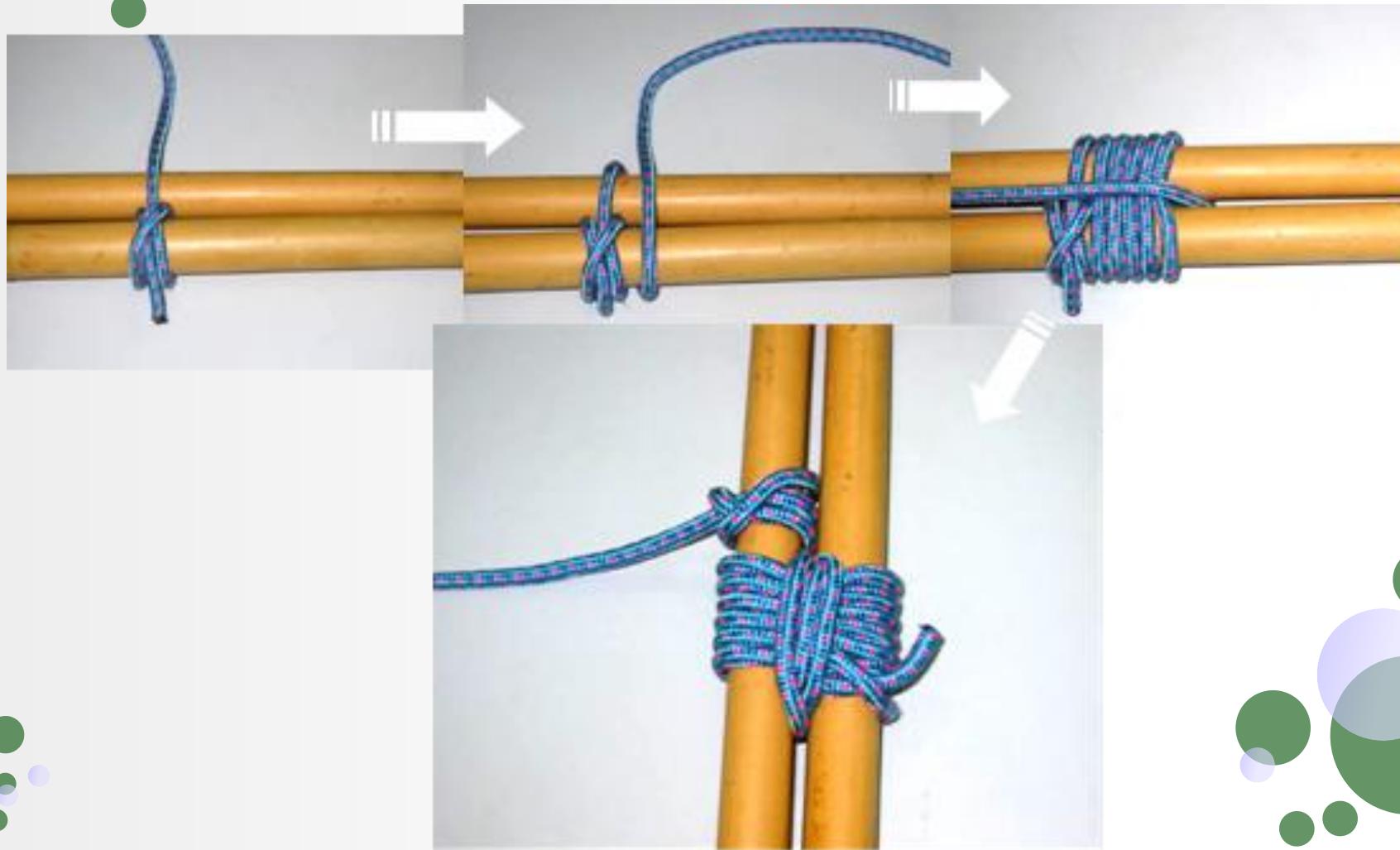
先在棍上纏繞一圈。



再以兩個半結結束。

剪立編結

(SHEAR LASHING – SHEER LEG)



四方編結 (SQUARE LASHING)



在主桿上以雙套結開結

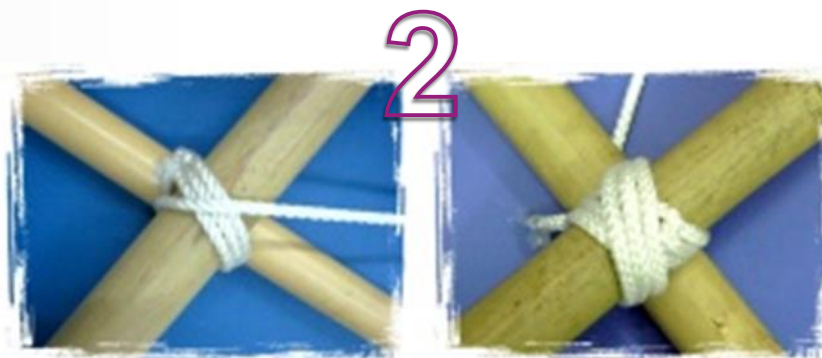


自下向上纏繞三次。



然後在兩桿之間再纏繞三圈收緊，最後在橫桿上以雙套收繩。

十字編結 (DIAGONAL LASHING)



紮作

